



Est'd



1835

IODAI SPRINT SERIES 2024

Saturday 23rd of March 2024

Lough Derg Yacht Club, Dromineer, Co. Tipperary, E45 NY60

SUPPLEMENTARY SAILING INSTRUCTIONS (SSIs)

1 RULES

- 1.1 These Supplementary Sailing Instructions (SSIs) are to be read in conjunction with the current IODAI Major Event Sailing Instructions (MESIs). If there is a conflict between the Notice of Race or MESI and these SSIs, these SSIs shall prevail.

2 COMMUNICATIONS WITH COMPETITORS

- 2.1 Notices to competitors shall be posted on the IODAI WhatsApp groups.
- 2.2 Competitors briefing for Main Fleet sailors will be held at 1100 on Saturday morning on or in the Club House, depending on the weather.
- 2.3 A safety briefing for rescue boats/support boat crews will be held at 1030 on or in the Club House, depending on the weather.

3 RACE OFFICE & SIGNALS MADE ASHORE

- 3.1 The Race Office is the office on the north east side of the ground floor of the club house (beside the small slipway).
- 3.2 Signals made ashore shall be displayed at the Main Mast in front of the clubhouse.

4 SCHEDULE

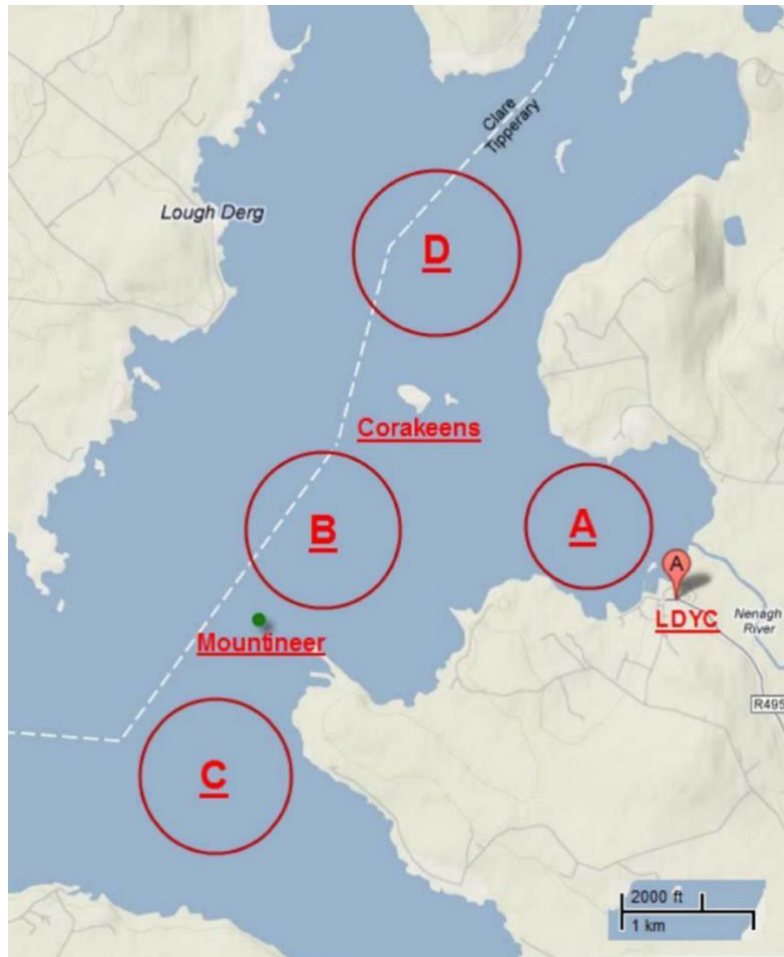
- 4.1 The schedule for the day is outlined below:

Sat 20 January	Volunteer & Safety Briefing	1030
	Main Fleet Welcome & Competitor Briefing - launch ASAP after	1100
	Main Fleet First Warning Signal	1210
	Prizegiving	ASAP after Racing

- 4.2 On the last scheduled day of racing, the first warning signal of a race shall not be made after 1500.

5 RACING AREA

- 5.1 The racing area will be one of the race areas on the chart below. It will be described and indicated to you at the competitors' briefing.



6 MARKS AND COMMITTEE BOATS

- 6.1 All racing marks are Crewsaver "Olympic" orange marks (triangular pyramid shaped).
- 6.2 The pin end starting mark may be a white spherical buoy or a Dell Quay Dory (boat) with an orange flag on a pole.
- 6.3 The pin end of the finishing line is a spherical white buoy unless an Olympic type orange mark on the course is utilised.
- 6.4 Start Boat – A Bermudian Sloop named "4 – Fun" displaying an orange flag
- 6.5 Finishing Boat – motor cruiser "Anette" or a Rib displaying a blue flag

7 THE START & THE FINISH

- 7.1 The start is between the main mast of the Committee Boat "4 – Fun" and a white spherical buoy, or a Dell Quay Dory (boat) displaying an orange flag on a pole. This will be indicated at the competitors briefing.
- 7.2 The finishing line is between a black and white striped staff/pole on the finishing boat and a white spherical finishing mark or where applicable one of the racing orange buoys.
- 7.3 If any part of a boat's hull, crew or equipment is on the course side of the starting line during the two minutes before her starting signal and she is identified, the race committee will attempt to indicate this fact by displaying flag V. Failure to indicate will not be grounds for a request for redress. This changes rule 62.1(a).

8 THE COURSE

- 8.1 The course will be the Optimist Worlds course (Appendix 1).
- 8.2 Course changes may be made based on (1) updates provided in the Competitors briefing or (2) as displayed on the black board (starboard side of the Committee Boat) on the water by the Race Officer.

9 HEARING REQUESTS

- 9.1 Protests / requests for redress shall be lodged via the event page on <https://www.racingrulesofsailing.org/> The protest time limit shall be 30 minutes after all boats have tallied in or after the Race Committee has accounted for any boats not tallied already.

10 OFFICIAL VESSELS

- 10.1 Jury boats shall display a yellow flag.

11 SAFETY AND TALLY

- 11.1 No fleet ribbons will be used. Sailors will be provided a unique number sticker at registration that is to be affixed to the bow and the accompanying trolley sticker affixed to their launching trolley to support identification and ease of recovery. This process will be used in lieu of a Tally system.

12 [DP] SUPPORT TEAMS

- 12.1 All support boat drivers must attend a safety briefing at 1030 on/in the clubhouse.
- 12.2 Personal buoyancy must be worn at all times.

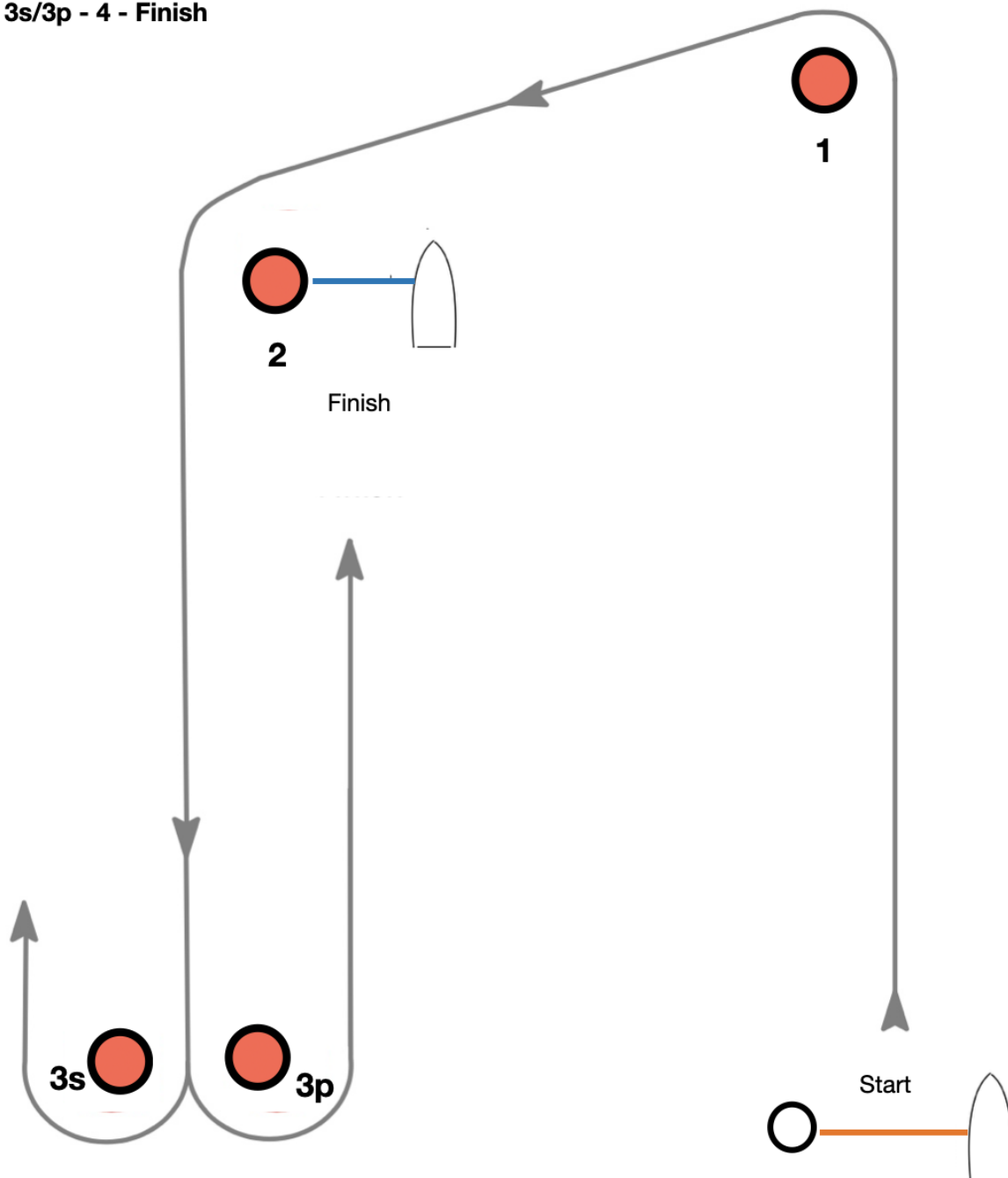
- 12.3 When the engine is running Kill cords MUST be worn by all helmsperson. Failure to comply with SSI 13.4 will result in the support vessel being excluded from the race area.
- 12.4 Support vessels must be equipped with a working VHF radio and monitor the channel appropriate to the fleet they are supporting.
- 12.5 From the time of the preparatory signal for each race, support vessels shall stay below a line approximately 100m to leeward of the starting line and at least 100m outside of the course and its extremities throughout the passage of that race.
- 12.6 Towing of competitors to and from the race area shall not be permitted unless requested or approved by the race committee. This shall be broadcast via VHF.
- 12.7 In the event of challenging situations arising from weather, sea state, lightening or any other factor deemed by the Race Officer as presenting a safety threat to the fleet. Flag Victor will be displayed and all support boats will assist in escorting and/or towing boats ashore as fast as is feasibly/safety and practicable ashore.
- 12.8 Channel 11 will be the primary VHF channel for communication, in the event of any disruption on this channel the Race Officer will indicate to use VHF Channel 9.

Appendix 1

IODAI Sprint

Course C: Optimist Worlds course

Start 1 - 2 - 3s/3p - 4 - Finish



Note: Mark Colours are for reference only