

2025 Optimist Irish National Championship

Lough Ree Yacht Club

in conjunction with

International Optimist Dinghy Association of Ireland

August 14th -17th

Lough Ree, Athlone Co. Westmeath

SUPPLEMENTARY SAILING INSTRUCTIONS (SSIs)

For the REGATTA RACING FLEET

1 RULES

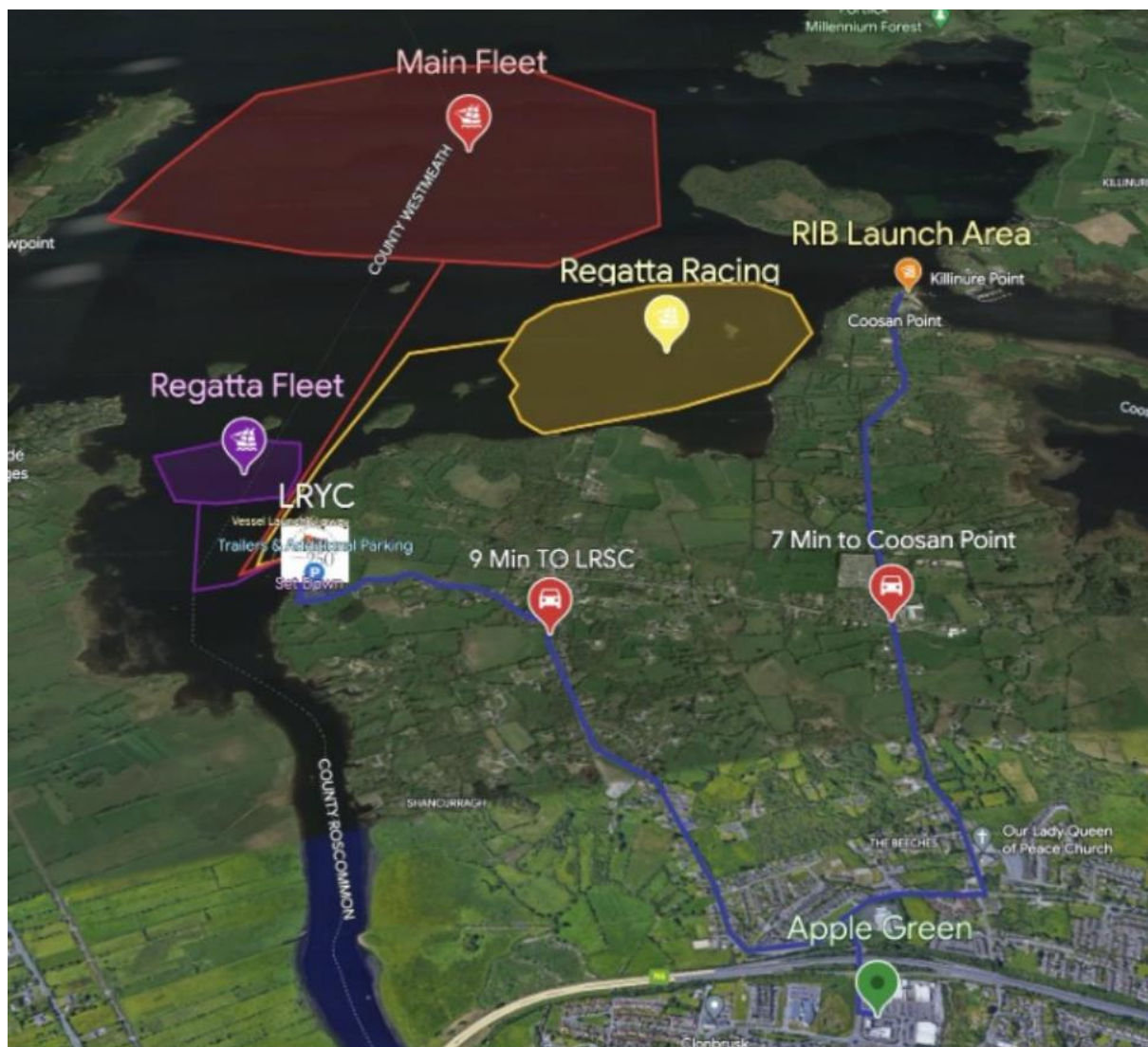
- 1.1 These Supplementary Sailing Instructions (SSIs) are to be read in conjunction with the current IODAI Major Event Sailing Instructions (MESIs) and the Notice of Race (NOR). If there is a conflict between the NOR or MESI and these SSIs, these SSIs shall prevail.

2 COMMUNICATIONS WITH COMPETITORS

- 2.1 The official notice board is at
<https://www.racingrulesofsailing.org/documents/12265/event>
- 2.2 The race office is located in the clubhouse at Lough Ree Yacht Club.
- 2.3 On the water, the race committee intends to monitor and communicate on VHF radio channels:
- 73 (Regatta Racing Fleet)
- 2.4 [DP] A compulsory safety briefing for official vessel and support vessel crews will be held at 09:30 Thursday 14th August, in front of or inside, the clubhouse.
- 2.5 A competitors briefing for Main Fleet sailors will be held at 10:00 on Thursday 14th in front of the clubhouse. **This will be followed immediately after the briefing for the Regatta Racing & Regatta Coaching Fleets.**
- #### 3 SIGNALS MADE ASHORE
- 3.1 Signals made ashore will be displayed on the flagpole on the Club's platform in front of the Clubhouse.
- 3.2 When flag AP is displayed ashore, '1 minute' is replaced with 'not less than 30 minutes' in Race Signals AP. This changes Race Signal AP and MESI 5.2.

5 RACING AREA

5.1 The Regatta Racing Fleet racing area is as shown.



5.2 More detailed racing area location information will be advised at the briefings and / or prior to launching each day.

5.3 The Regatta Coaching Fleet area is, as shown, closer to the Club house.

6 MARKS

6.1 Regatta Racing Fleet will use Yellow inflatable marks.

7 OBSTRUCTIONS

7.1 There are no designated obstructions in the Race Area other than those set out in MESI 11. Competitors should pass on the correct side of navigation marks on the way to and from the Race Area.

8 THE START

8.1 The starting line is between a staff/mast displaying an orange flag on the committee boat at the starboard end and a staff on the port-end starting boat.

9 THE FINISH 9.1

The finishing line is between a staff/mast displaying an Blue flag on the committee boat at the starboard end and Black Buoy at the port end.

10 HEARING REQUESTS

10.1 Hearing request and acknowledgement forms (SI 15.3) are available at <https://www.racingrulesofsailing.org/documents/12265/event>

11 OFFICIAL VESSELS

11.1 10.1 Official vessels, other than those listed below, will carry Red, Numbered LRYC Burgee. Jury boats will carry a yellow flag.

Role	Name	Description
Committee Vessel	Sea Drive	Etap Yacht

11.2 The Committee Vessel will be explained at the briefing.

12 [DP] SUPPORT TEAMS

12.1 Support person vessels shall be identified with White, Numbered Event Flag.

13 COURSE

13.1 The course will be a triangular course as indicated in the sketch below. All marks to be pass to port.

Start – 1 – 2 – 3 – 1 – 2 – 3 - Finish

