



Connacht Championships 2022

9th & 10th of July

SUPPLEMENTARY SAILING INSTRUCTIONS (SSIs)

1 RULES

- 1.1 These Supplementary Sailing Instructions (SSIs) are to be read in conjunction with the current (latest revision) IODAI Major Event Sailing Instructions (SIs). If there is a conflict between the Notice of Race or MESI and these SSIs, these SSIs shall prevail.

2 COMMUNICATIONS WITH COMPETITORS

- 2.1 The official notice board is located at <https://www.racingrulesofsailing.org/documents/4293/event>.
- 2.2 The race office is located at Galway Bay Sailing Club, New Harbour, Rinville, Oranmore, Co. Galway, H91 W678, telephone 091-794527, email rcjy@gbsc.ie.
- 2.3 On the water, the race committee intends to monitor and communicate on VHF radio channel 71.

3 SIGNALS MADE ASHORE

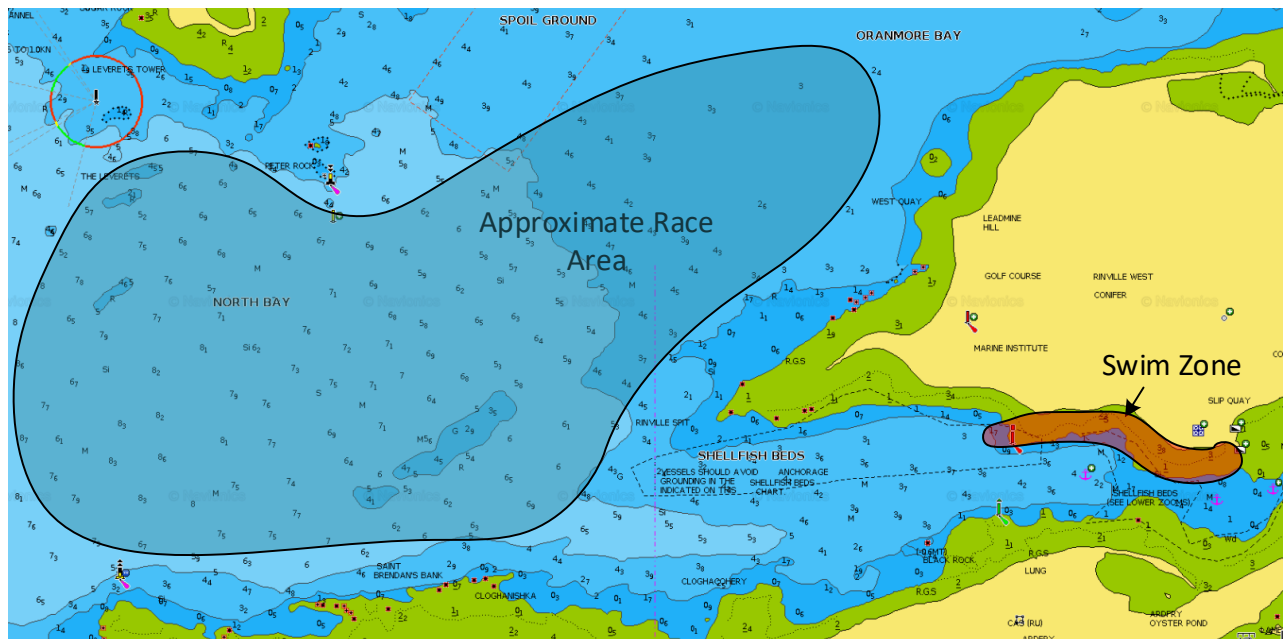
- 3.1 Signals made ashore will be displayed on the flagstaff located at the balcony of the GBSC clubhouse.

4 SCHEDULE

Saturday 9 th July	1030	Coach and Support Boat Safety Briefing
	1100	Main Fleet Competitor Briefing
	From 1115	D Flag displayed
	1225	First Warning Signal: 3 Races back-to-back
Sunday 10 th July	From 0945	D Flag displayed
	1055	First Warning Signal: 3 Races back-to-back

5 RACING AREA

- 5.1 The racing area is north and/or west of the Marine Institute (Rinville Spit), north of the Cockle North Cardinal mark and south of Peter Rock South Cardinal mark and the Leverets lighthouse.



6 MARKS AND COMMITTEE VESSELS

- 6.1 Marks 1 and 2 are tall, cylindrical orange inflatable marks. Marks 3A, 3B, 4A and 4B are shorter bright orange inflatable marks.



Mark 1 and Mark 2



Marks 3A, 3B, 4A and 4B

- 6.2 The Start Vessel is a white 38' cutter "Golden Harvest" with a green stripe and a green sail cover, similar to the one shown below.



- 6.3 The Finish Vessel is dark Blue Bermudan sloop "Out of the Blue" with a white top similar to the one shown below.



6 OBSTRUCTIONS

- 6.1 All vessels must keep clear of the swimming zone on the north shore of the inner bay marked by yellow buoys which extends approximately 1km west of the slipway from which boats will be launched while making their way to or from the race area.

7 THE START

- 7.1 The starting line is between the main mast displaying an orange flag on the committee boat at the starboard end and a red and white staff displaying an orange flag on the port-end starting boat. The port end vessel and pole may be replaced by a red danbuoy with a flag.
- 7.2 If any part of a boat's hull, crew or equipment is on the course side of the starting line during the two minutes before her starting signal and she is identified, the race committee will attempt to indicate this fact by displaying flag B. Failure to indicate will not be grounds for a request for redress. This changes rule 62.1(a).



9 THE FINISH

- 9.1 The finishing line is between the main mast on the finishing boat at the starboard end and the course side of the port end finishing danbuoy with a flag. When a race committee vessel displays code flag S over C near marks 3A/3B, boats shall sail between the gate marks from the direction of the previous mark and sail directly to the finish line. This changes rule 32.2.

10 HEARING REQUESTS

- 10.1 Hearing request forms are available at https://www.racingrulesofsailing.org/events/4293/event_links
- 10.2 Protest hearings will be held in the Marine Institute building to the rear of the GBSC clubhouse.

11 OFFICIAL VESSELS

- 12.1 Official vessels, other than those listed below, will carry white flags on a pole and/or yellow boards. Jury boats will carry a yellow flag.

Role	Name	Description
Committee Vessel	Golden Harvest	White/Green Cutter
Port end starting boat	N/A	RIB / Danbuoy
Finishing boat	Out of the Blue	Blue/White Sloop